

# Lucille

Words and Music: Roger Bowling and Hal Bynum.

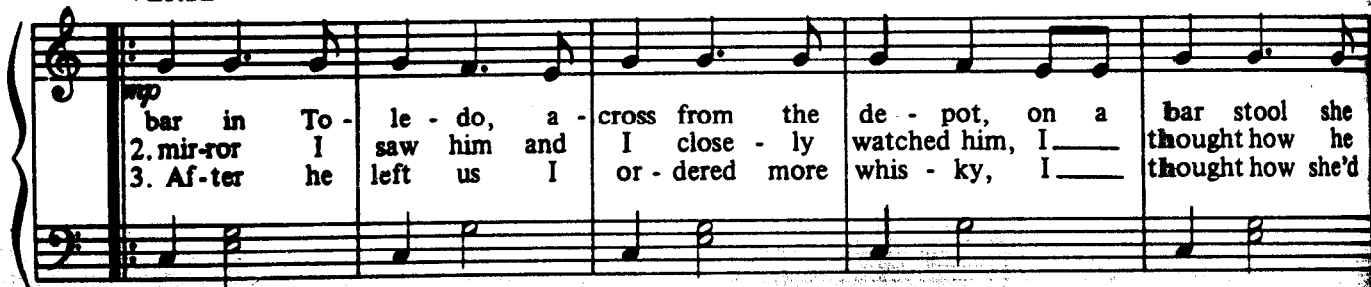
© Copyright 1976 ATV Music Corp./Andite Invasion Music, USA.  
Campbell, Connelly & Co. Limited, 78 Newman Street, London W1.  
All rights reserved. International copyright secured.

Bright waltz tempo

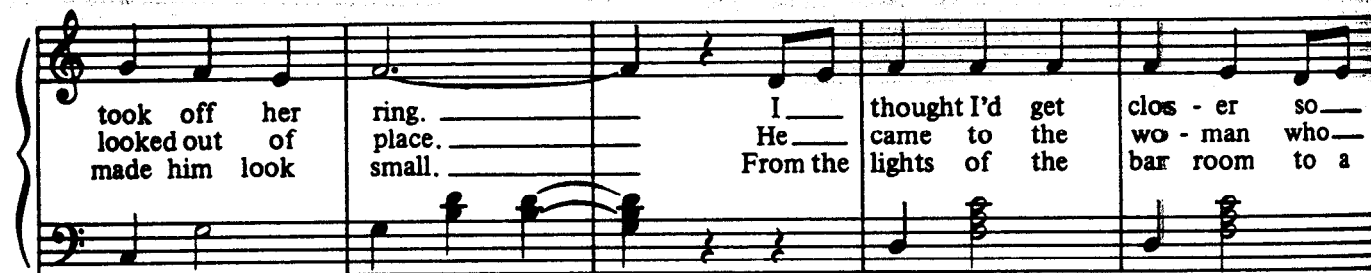


C

VERSE

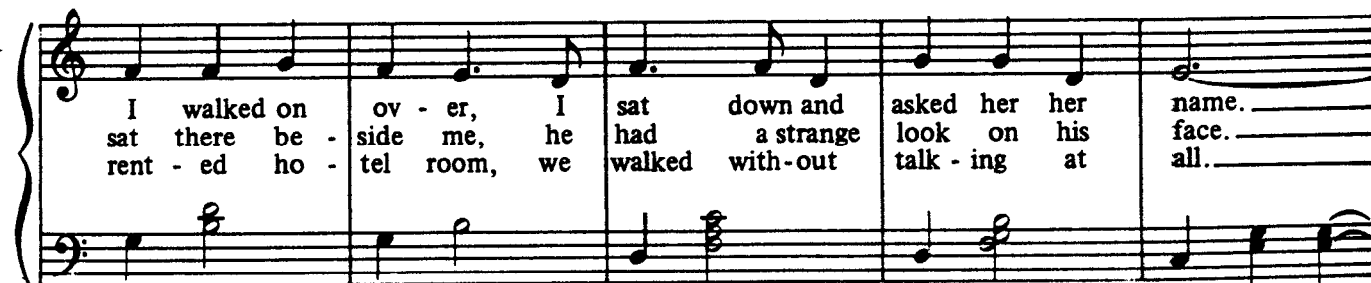


(C)



G7

Dm7



G7

Dm7

G7

C

When the drinks fin - al - ly hit her, she said "I'm no quit - ter, but I  
The big hands were cal - loused, he looked like a moun - tain, for a  
She was a beau - ty, but when she came to me, she

fin - al - ly quit liv - ing on dreams. I'm hun - gry for  
min - ute I thought I was dead. But he start - ed  
must have thought I'd lost my mind. I could - n't

C7 F G7

laugh - ter and here ev - er af - ter, I'm af - ter what - ev - er the  
shak - ing, his big heart was break - ing, he turned to the  
hold her 'cos the words that he told her kept com - ing back

1

oth - er life brings." 2. In the wo - man and said,  
time af - ter time.

C G7 C

23.

CHORUS

"You picked a fine time to leave me Lu - cille, with

F

four hun - gry chil - dren and a crop in the field.

C

I've had some bad times, lived through some sad times, but this time your

F

hurt - ing won't heal. You picked a fine time to leave me, Lu -

C G7

To 3rd Verse

cille." *mf*

C

To Chorus and Fade

cille. *mp* You picked a fine time to leave me, Lu -

C