

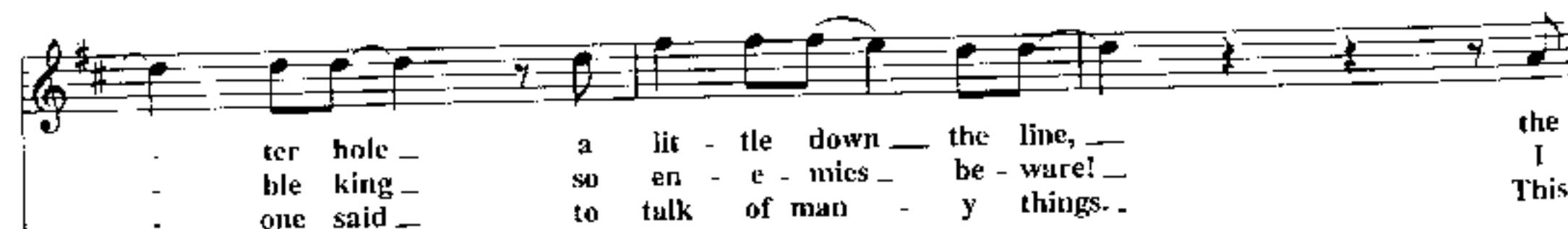
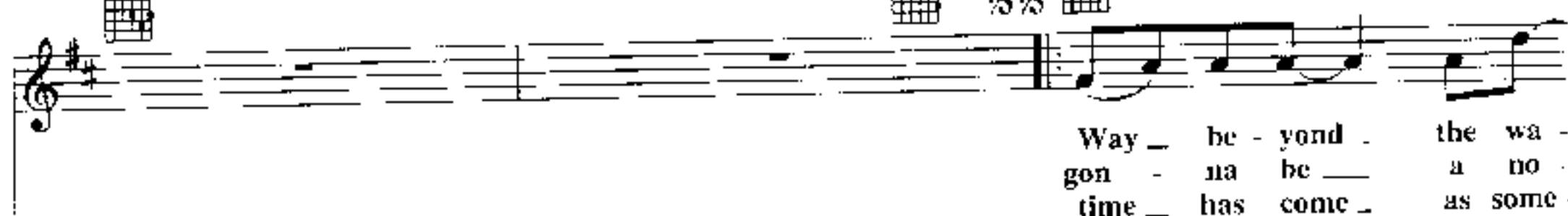
I JUST CAN'T WAIT TO BE KING

(as performed by ELTON JOHN)

Music by ELTON JOHN

Lyrics by TIM RICE

Bright rock shuffle (♩ - ♩³ - ♩)





jun - gle and the plains and peaks are
on - ly need a lit - tle time, per
may be true, but I would rath - er



sched - uled to be mine. I'm gon - na be the rul -
haps a lit - tle hair. I'm gon - na be the mane
stick to talk - ing Kings. It's eas - y to be roy -

- er of most ev - 'ry - thing a - round,
- e - vent like no king was be - fore.
- al if you're al - read - y le - o -



_____ from the grand - est of the moun -
_____ I'm brush - ing up on look -
nine. It is n't just my right

- tains to the hum - ble com - mon ground. _____ My
 - ing down, I'm work - ing on my roar. _____ The
 - e - ven if my left will be di - vine. _____ The

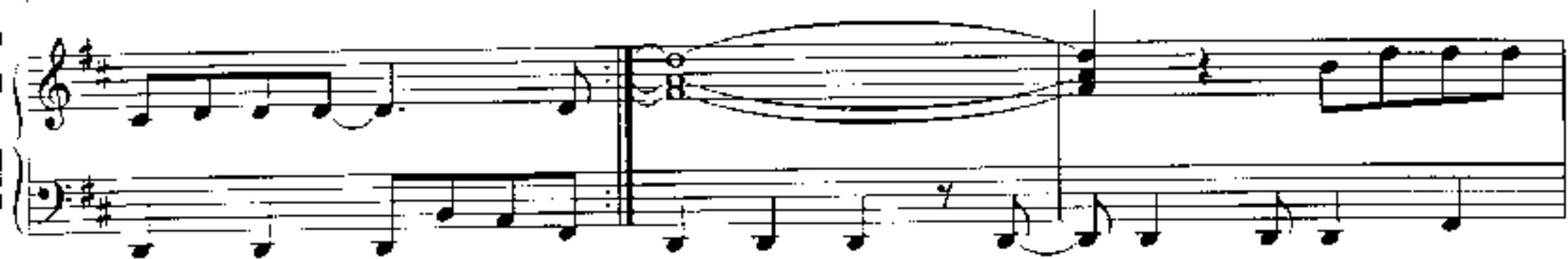
Em7 G A
 reign will be a su - per - awe - some thing.
 fau - na and the flo - ra gon - na swing.
 mon - ar - chy is wait - ing to go zing.

To Coda II G A A7
 Oh, I just can't wait to be king...

1 D



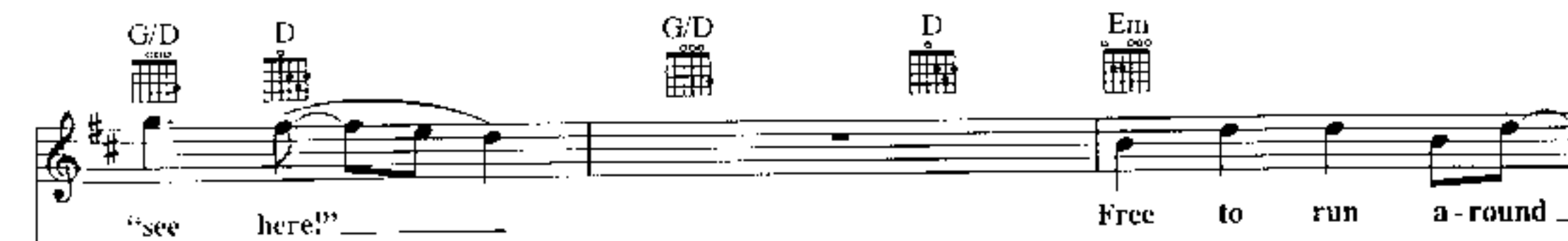
No one say-ing



no one say-ing "be there,"



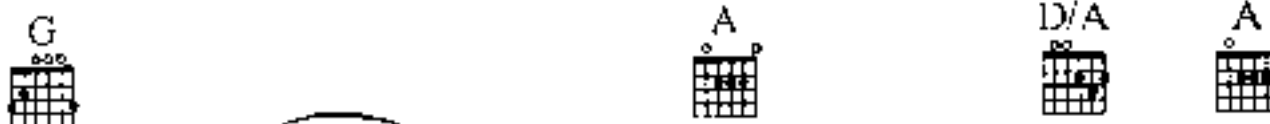
no one say-ing




Free to run a-round




G A D/A A




all day. I'll be free



G D/A A7 D





to do it my way.



To Coda ☺



D7 Em/D D G/D D D7



Chords: G, C/G, G, C/G

Measure 1: Treble clef has a whole rest. Bass clef has a half note G2, quarter note A2, quarter note B2. Chord G.

Measure 2: Treble clef has a whole rest. Bass clef has a half note C3, quarter note D3, quarter note E3. Chord C/G.

Measure 3: Treble clef has a whole rest. Bass clef has a half note F#3, quarter note G3, quarter note A3. Chord G.

Measure 4: Treble clef has a whole rest. Bass clef has a half note B2, quarter note C3, quarter note D3. Chord C/G.

Chords: D7, Em/D, D, D7, G/D, D, D7

Measure 5: Treble clef has a half note G3, half note A3. Bass clef has a half note E2, quarter note F#2, quarter note G2. Chord D7.

Measure 6: Treble clef has a half note B3, half note C4. Bass clef has a half note A2, quarter note B2, quarter note C3. Chord Em/D.

Measure 7: Treble clef has a half note D4, half note E4. Bass clef has a half note D2, quarter note E2, quarter note F#2. Chord D.

Measure 8: Treble clef has a half note F#4, half note G4. Bass clef has a half note C3, quarter note D3, quarter note E3. Chord D7.

Chords: Em/D, D7, D, D7

Measure 9: Treble clef has a half note A4, half note B4. Bass clef has a half note D2, quarter note E2, quarter note F#2. Chord Em/D.

Measure 10: Treble clef has a half note C5, half note D5. Bass clef has a half note G2, quarter note A2, quarter note B2. Chord D7.

Measure 11: Treble clef has a half note E5, half note F#5. Bass clef has a half note C3, quarter note D3, quarter note E3. Chord D.

Measure 12: Treble clef has a half note G5, half note A5. Bass clef has a half note D2, quarter note E2, quarter note F#2. Chord D7.

Chords: G, C/G, A, G/A, D, G/D, D

Measure 13: Treble clef has a half note B4, half note C5. Bass clef has a half note E2, quarter note F#2, quarter note G2. Chord G.

Measure 14: Treble clef has a half note D5, half note E5. Bass clef has a half note A2, quarter note B2, quarter note C3. Chord C/G.

Measure 15: Treble clef has a half note F#5, half note G5. Bass clef has a half note D2, quarter note E2, quarter note F#2. Chord A.

Measure 16: Treble clef has a half note A5, half note B5. Bass clef has a half note G2, quarter note A2, quarter note B2. Chord G/A.

Measure 17: Treble clef has a half note C6, half note D6. Bass clef has a half note C3, quarter note D3, quarter note E3. Chord D.

Measure 18: Treble clef has a half note E6, half note F#6. Bass clef has a half note D2, quarter note E2, quarter note F#2. Chord G/D.

CODA

D.S. al Coda

D.S.S. al Coda II

No one say-ing

The

CODA II

just

can't

wait

to be

king!

Oh, oh,

Repeat and Fade

Oh, oh,

Oh, I